



# the Tarpaper

The Tarflower Chapter of the Florida Native Plant Society

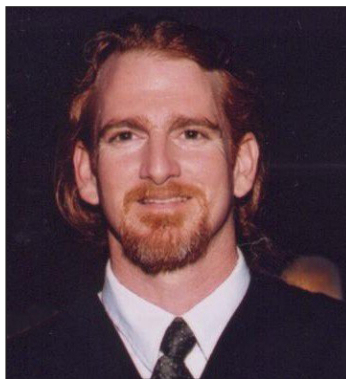
Volume XXVIII • September 2011



## SEPTEMBER 6 PROGRAM: **Native Trees Under Attack** presented by Don Spence

Laurel wilt (LW) is a disease caused by *Raffaelea lauricola*, a fungus that is vectored by an invasive, non-native beetle, the redbay ambrosia beetle, *Xyleborus glabratus* (RAB). LW has caused the death of millions of redbay, avocado and sassafras trees ranging from South Carolina to southern Florida and west to Mississippi. Don Spence has examined the survivability of the insect and the disease in felled trees. He will present an update on LW and discuss the real and ongoing danger of the movement of infested logs across state lines.

Don Spence is a Certified Municipal Arborist and has a Bachelors of Science in Biology from Stetson University and a Masters of Science in Biology from the University of Central Florida. Don is the President of Native Florida Landscapes, LLC, and has been specializing in health assessment of Florida plant communities, home landscapes and trees for 17 years. Don is former member of the Volusia Soil and Water Conservation District and has been appointed to environmental policy review committees in Volusia County. He has been awarded the Silver Palmetto award from the Florida Native Plant Society and has won the Outstanding Student Presentation Award at the Florida Academy of Sciences meeting and Southwide Forest Disease Workshop. Don is currently pursuing a PhD in plant pathology at the University of Florida where he is studying laurel wilt disease.



## UPCOMING FIELD TRIPS

### SEP 17-18 **Fakahatchee Trip**

Our trip to the Fakahatchee Strand is full and only those who have confirmed with Paul Eisenbrown directly will be able to participate. If you are interested in going at a later date, visit <http://friendsoffakahatchee.org/> for more information. They conduct tours from November to April.

### OCT 8 **Orlando Wetlands Park**

On this trip, we will be assisting the Orlando Wetlands Park in rewriting their self-guided tour brochures as well as do our usual plant ID. Visit [http://www.cityoforlando.net/public\\_works/wetlands/Maps\\_Brochures.htm](http://www.cityoforlando.net/public_works/wetlands/Maps_Brochures.htm) to download and print the current brochure, South Woods Trail Self Guided Tour. Of course it will be hot and there will be mosquitoes (it is a wetlands park) so prepare accordingly. More details will be in the October *Tarpaper*.

Please contact Paul Eisenbrown at [peisenbrown@earthlink.net](mailto:peisenbrown@earthlink.net) if you have any questions.

## UPCOMING PROGRAMS

**OCT 4** Catherine Bowman/Marc Godts:  
"Native Landscaping for Dry Shade"

**NOV 1** Jean Vasicek: "The Honeybee"

**DEC 6** Dr. Jack Stout: "Why Do Our  
Plants Become Rare?"

**JAN 3** Eleonor Foerste: "How to  
Distinguish Between Oaks and Pines"

## HELP THE FLORIDA WILDLIFE CORRIDOR EXPEDITION

On January 17, 2012, a small team of conservationists will embark on a 100 day, 1000 mile trek from the Everglades to Okefenokee in southern Georgia. Their mission is to raise awareness for the important opportunity to protect and connect a corridor of natural lands, water bodies and working ranches and farms throughout interior Florida.

They need your help raising awareness and support. Please share the Florida Wildlife Corridor cause with friends and please make a donation to support their campaign. Each \$25 donated will sponsor a mile of the expedition. To learn more, visit [Facebook.com/FloridaWildlifeCorridor](https://www.facebook.com/FloridaWildlifeCorridor) and [FloridaWildlifeCorridor.org](http://FloridaWildlifeCorridor.org).

## ANNOUNCEMENTS

### Sep 3 – PLANT RESCUE AT OIA

Even though the weather may not have cooled off, we are planing a plant rescue at the Orlando International Airport (OIA) on Saturday, Sep. 3, 2011. We will meet at 8:30am at the parking lot of Tijuana Flats at the intersection of Dowden Road and CR15 (Narcoossee Road). This is a new strip mall like area, south of the Beachline on Narcoossee Road. This is a wetland area where we will be rescuing wiregrass, pitcher plants and other wetland species for the new wetland garden at Oakland Nature Preserve — and your own use, of course. Bring plenty of water, insect repellent, hat, sunscreen for yourself, pots and shovels to dig. If you plan to attend, please let Jackie Rolly know at [j.y.rolly@att.net](mailto:j.y.rolly@att.net) so no one gets left behind or if we have to cancel due to weather or site conditions.

### Sep 24 – FLORIDA'S WATER CELEBRATION

The St. John's River Water Management district will host a celebration of Florida's water at the Oakland Nature Preserve on Saturday, Sep. 24, 2011 from 10am until 2pm. Bring the whole family and participate in a variety of water-themed, hands-on activities; take guided edible plant and birding walks; learn about the hydrology of the area; and participate in a shoreline clean-up and planting along Lake Apopka. There will be educational and food vendors as well as live music from The Ashley Gang and Lucky Mud. For more information or to volunteer, contact Maryann Krisovitch at [mkrisovi@sjrwmd.com](mailto:mkrisovi@sjrwmd.com) or 352-434-5025.



*This photo was taken recently of the wiregrass and salvaged plants at the Oakland Nature Preserve. The wiregrass was purchased with the donation made by the Tarflower Chapter in 2010. With the recent rains, the wiregrass is thriving, as well as the two salvaged blue lupines (*Lupinus diffusus*). The photo shows only a small portion of the area planted with the wiregrass. The Preserve invites all to see the great progress being made in restoring this old orange grove/slash pine farm, and wishes to thank all Tarflower members and the board for their generous support.*

## TARFLOWER POLO SHIRT FUTURE ORDERS

The Tarflower chapter will have a few shirts available for sale at the Sep. 6 meeting.

To avoid carrying a large inventory, we will take orders again at the Oct 4 and Nov 1 meetings for delivery at the Dec 6 meeting.

The shirts may be pre-ordered in a variety of colors. Visit our chapter page or stop by the sales desk at our monthly meeting to see color choices.

Anyone interested in ordering a Tarflower polo shirt should stop by the sales desk at a meeting and let us know. All sizes and colors will sell for \$25 each. Any questions can be answered by contacting Frank Winzig via email at [fwinzig@gmail.com](mailto:fwinzig@gmail.com). Thank You!



## FNPS' ONLINE SHOPPE HAS A NEW URL!

**[thefnpsshop.com](http://thefnpsshop.com)**

*Stimulate the economy – shop today!*

Send your articles, events, ideas, photos and suggestions to Stacey Matrazzo, *The Tarpaper* Editor, at [stacey@impactpress.com](mailto:stacey@impactpress.com). (Please do not reduce or compress photos before sending; a size of 3x4 at 300dpi is preferred.) The deadline to submit an article, event or announcement for the October issue is September 19.



## BECOME A MASTER NATURALIST

The Orange County UF/IFAS Extension Office will once again be offering the **Freshwater Wetlands Module of the Florida Master Naturalist Program**, as well as a **Special Topics Course on Wildlife Monitoring**.



The Freshwater Wetlands Module, 6-week course, runs every Tuesday from Oct 4–Nov 8 and will provide 40 contact hours through classroom presentations and field trips to wetland habitats. To register or for more information, visit the Florida Master Naturalist website at <http://www.masternaturalist.ifas.ufl.edu/>.

The Special Topics Course on Wildlife Monitoring is a 3-day course, running Oct 5–7. (Location TBD). This course will provide participants with a better understanding of the reasons for monitoring wildlife populations. Students will learn different approaches and techniques for monitoring mammal, bird and herpetofauna populations, and how these activities contribute to conserving and managing wildlife populations. The course provides 24 contact hours consisting of three workshops that involve three mornings of presentations and three mornings of field activities.

To register or for more information, visit <http://www.masternaturalist.ifas.ufl.edu/>. Please note that the website may not contain the Orange County Wetlands Course at this time, please keep checking.

If you have unanswered questions, please contact:

Jennifer Ramos, Extension Faculty

Orange County UF/IFAS Extension Education Center  
6021 South Conway Road, Orlando, FL 32812-3604  
Office: 407-254-9224

## FNPS PLANT EXPEDITION TO NICARAGUA — Only 3 spots left on 2nd Trip!!

Following the success of our **SOLD OUT** trip in November, Aventuras Naturales, a Florida-based eco-travel company, has added a second exciting and educational plant expedition to Nicaragua for FNPS members. Nicaragua's flora and fauna is only recently emerging as being very distinct from her neighbors Costa Rica and Panama. Her dramatic geography, marked by volcanoes, lakes and forests, creates a striking landscape and biodiversity second to none. This is the perfect trip for the nature lover and plant enthusiast!

**Trip Date: January 14th, 2012**

**Trip Length: 12 days**

**Price: \$3300** (includes airfare from Miami Int'l Airport)

**Activities: Hiking, Plant Exploration, City Walks**

For more information or to reserve your space, call 954-603-2907 or email [tours@aventurasnaturales.org](mailto:tours@aventurasnaturales.org) today!

## AUGUST FIELD TRIP to Tosohatchee

by Pete Dunkelberg



Our August field trip was a great success. We actually saw the beautiful little *Nemastylis* flowers pop open as advertised, and right on time. To do this, we went to Tosohatchee in the afternoon instead of in the morning as we usually do.

A member of the Iris family, the tall narrow stems of the *Nemastylis floridana* or fallflowering ixia are very hard to see without a flower on top. You wouldn't know they were there until the flower bud begins to swell in the afternoon. Then between 5 and 6pm, the bud suddenly pops part way open. It opens fully about half hour later. If you had been there, you would understand why this deep blue flower is known as the celestial lily.



swelling *Nemastylis floridana* bud



*Nemastylis floridana* bud opening



*Nemastylis floridana* bud fully open

As usual, there was much else to see at Tosohatchee — from buzzards and turkeys to the St. Johns River itself. Some other impressive flowers were on display including the swamp milkweed (*Asclepias incarnata*), swamp hibiscus (*Hibiscus grandiflorus*) and the queen of the swamp, scarlet rosemallow (*Hibiscus coccineus*).

Around 6:30pm, most of us left Tosohatchee and went to a fine dinner at the Cypriana restaurant. Many thanks to Ed Magee for taking the pictures on this trip.

## SOCIETY NEWS

**Chapter Meetings** — Chapter meetings are held the first Tuesday each month at **HARRY P. LEU GARDENS**, (1920 N. Forest Avenue, Orlando). The next meeting is **Tuesday, September 6 at 7pm**. See you there!  
(For directions, call 407-246-2620 option 1).

**Executive Committee** — The next board meeting will be **Thursday, September 15, 2011 at 6pm**. For more information, contact Catherine Bowman. Members are welcome to attend.

**The Tarpaper Online!** — Current and past issues of *The Tarpaper* can be viewed online by accessing the chapter website at [www.fnps.org](http://www.fnps.org). Click on Chapters -> Tarflower and follow the instructions to *The Tarpaper!*

### BECOME A MEMBER

Make checks payable to:

Florida Native Plant Society  
P.O. Box 278  
Melbourne, FL 32902-0278

To join online or for more information, visit [www.fnps.org](http://www.fnps.org) or call 321-271-6702.

\$35	Individual
\$50	Family/Household
\$15	Full-time Student
\$15	Library
\$50	Non-Profit
\$75	Contributing
\$100	Supporting
\$125	Business/Corporate
\$250	Donor
\$1000	Life

## Florida Native Plant Professionals & Nurseries

### AlterNatives

(Landscape Design and Installation)  
Rich Beggs, [oviedonatives@msn.com](mailto:oviedonatives@msn.com)  
(407) 538-1940

### Biosphere Native Plant Nursery

Jim Thomas, [biosphere@biospherenursery.com](mailto:biosphere@biospherenursery.com)

### Evolving Landscapes

(Landscape Design and Installation)  
David Schroeder, [evolvinglandscapes@yahoo.com](mailto:evolvinglandscapes@yahoo.com)  
(407) 234-2514

### Full Moon Native Plant Nursery

Kevin Bagwell, [kevin@fullmoonnatives.com](mailto:kevin@fullmoonnatives.com)  
(386) 212-9923

### Green Images Native Plant Nursery

David Drylie, [greenimage@aol.com](mailto:greenimage@aol.com)  
(407) 579-6887

### Green Isle Gardens Native Plant Nursery

Marc Godts, [mgodts123@gmail.com](mailto:mgodts123@gmail.com)  
(321) 436-4932



*Tarflower Chapter*  
*Florida Native Plant Society*  
*P.O. Box 536021*  
*Orlando, FL 32853-6021*

President — Catherine Bowman 407-761-7109; [garberia08@gmail.com](mailto:garberia08@gmail.com)  
Vice President (Programs) — Jackie Rolly 407-359-4963; [j.y.rolly@att.net](mailto:j.y.rolly@att.net)  
Vice President (Events) — Pete Dunkelberg 407-277-6242; [pdunkelberg@earthlink.net](mailto:pdunkelberg@earthlink.net)  
Secretary — Kay Hudson 407-432-2364; [Kay@americanbuilders.com](mailto:Kay@americanbuilders.com)  
Treasurer — Frank Winzig 407-496-6151; [fwinzig@gmail.com](mailto:fwinzig@gmail.com)  
Field Trips — Paul Eisenbrown 407-394-3519; [peisenbrown@earthlink.net](mailto:peisenbrown@earthlink.net)  
Memberships — Phyllis Gray 407-253-5462 (W); [phyllis.gray@amec.com](mailto:phyllis.gray@amec.com)  
Director — Jackie Rolly 407-359-4963; [j.y.rolly@att.net](mailto:j.y.rolly@att.net)  
Plant Rescue — Marge Holt 407-679-6759  
Editor — Stacey Matrazzo; [stacey@impactpress.com](mailto:stacey@impactpress.com)  
Mailing — Chuck Roux 407-851-8889; [clroux@bellsouth.net](mailto:clroux@bellsouth.net)  
WEBSITE — <http://www.fnps.org/pages/chapters/chapterpg.php?keyword=Tarflower>